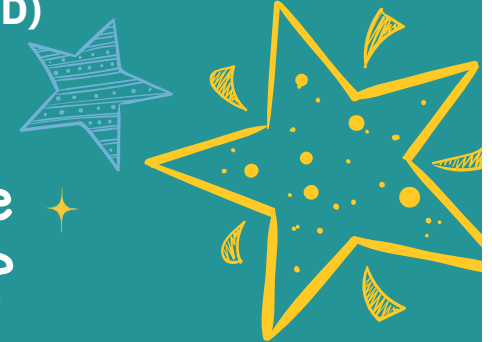




Information, advice and services for Reading's children and young people with special educational needs and disabilities (SEND)



## What is the Local Offer?

The Local Offer is a service and website ([readingsendlocaloffer.org](http://readingsendlocaloffer.org)) that provides lots of information and support for children and young people, aged 0-25, with special educational needs and disabilities (SEND).

It enables children and young people, their families and carers to access the support which best matches their own needs.

It's also a useful resource for professionals and service providers.

# What information is available?

- Details of early years childcare and education settings, schools and colleges
- Local health services and provision for social care
- Local special needs support
- Guidance and services to assist in preparing children and young people for adulthood, including pathways to employment
- Carers advice and support
- Special needs activities and Short Breaks
- Transport options
- A calendar of activities, events and local groups
- Plus, lots of advice and guidance on a whole range of topics.



## Contact



**0118 937 3777 (option 2)**



**localoffer@reading.gov.uk**



**www.readingsendlocaloffer.org**



**@ReadingLocalOffer**